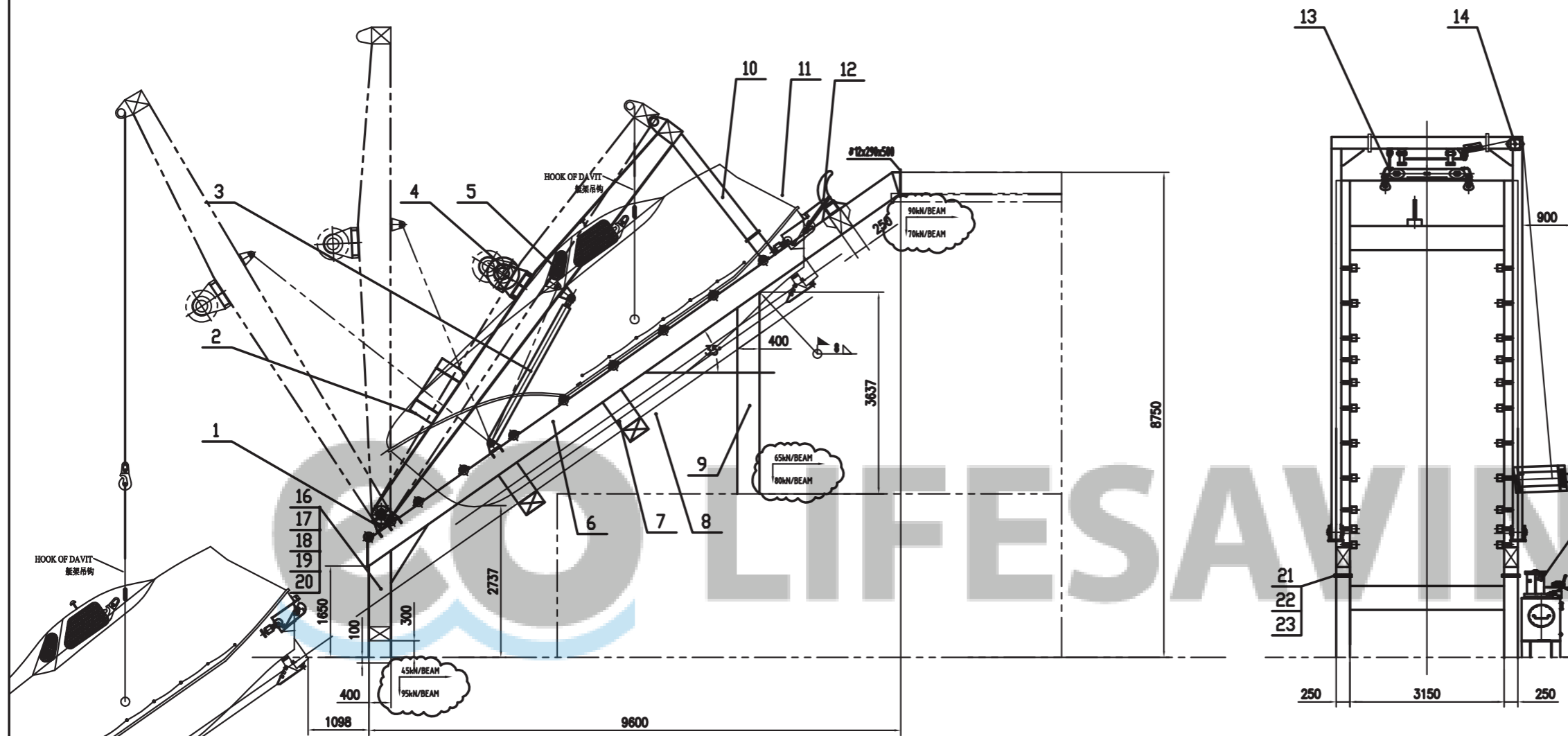


技术数据 TECHNICAL DATA		
名称	单位	数值
NAME	UNIT	QUANTITY
最大工作负荷	KN	85
MAX. WORKING LOAD		
最大起升负荷	KN	56
MAX. HOISTING LOAD		
起升速度		> 3m/min
HOISTING SPEED OF BOAT		
最大容量	m	50
MAX. WIRE CAPACITY		
钢丝绳规格		18x19-22-1770 -NON-TWIST
TYPE OF WIRE ROPE		
液压油牌号		N46 (ISO VG46)
TYPE OF OIL		
泵站电机 MOTOR OF OIL PUMP	MODEL NO.	Y160M-4-H
	VOLATAGE FREAUENCE	440V/60Hz
	OUTPUT FREQ.	15kW
底座	SUIT BOAT	JY85FF



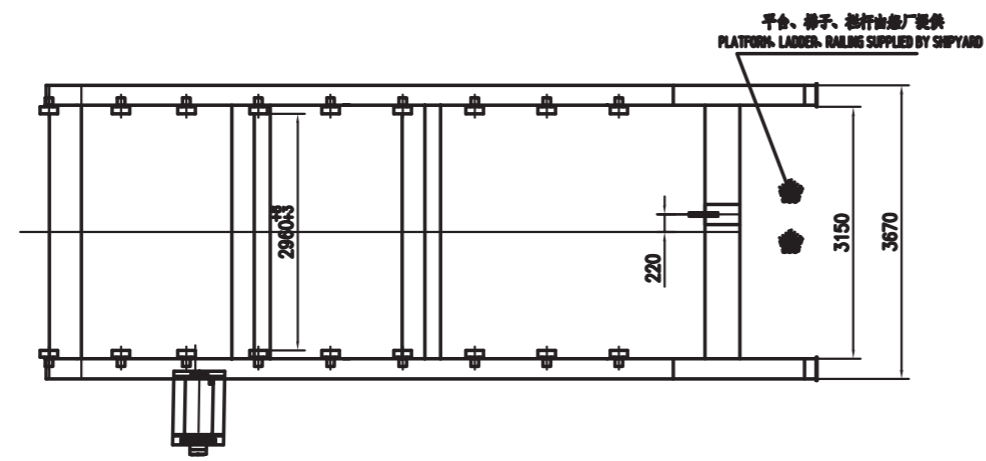
FH85 LAUNCHING APPLIANCE  
GA.  
215ZF585-00  
215ZF585-00

技术要求

1. 本装置满足\*1974年国际海上人命安全公约(MSC.47(66))及国际救生设备规则(MSC.48(66))\*要求。
2. 实船安装完毕后,各法兰板用电焊焊牢。
3. 件19放艇操作指示牌由船厂现场定位布置。

TECHNICAL REQUIREMENT

1. THE APPLIANCE CONFORM TO \*1974 SLOAS [MSC.47(66)] AND INTERNATIONAL LSA CODE [MSC.48(66)].
2. EVERY FLANGE PLATE SHOULD BE FIXED BY WELDING AFTER INSTALLED ON SHIP BOARD.
3. PART 19 (OPERATION PLATE) SHOULD BE INSTALLED AT WORKSITE BY YARD.



Ship name :Fairplayer

23	M24 GB6170-86	螺母 NUT	88	A2-70		
22	G893-87	垫圈 WASHER	88	GB93		
21	M24x65 GB5783-86	螺栓 BOLT	88	A2-70		
20	930ZF-215MP-54	警告牌 WARNING PLATE	1	15/100BPTI		
19	930ZF-215MP-31	操作指示牌 OPERATION PLATE	1	15/100BPTI		
18	930ZF-215MP-13	铭牌 NAME PLATE	1	15/100BPTI		
17	930ZF-215MP-05	指示牌 INDICATION PLATE	1	15/100BPTI		
16	25X10 GB867-86	铆钉 RIVET	12	HL2		
15	215ZF516-15-0	泵站 PUMP SYSTEM	1	ASSEM.	445	445
14	215ZF585-08-0	艇架 BOAT FALL UNIT	1	ASSEM.	270	270
13	215ZF585-07-0	艇架 FLOATING UNIT	1	ASSEM.	280	280
12	215ZF585-06-0	艇架 RELEASE HOOK UNIT	1	ASSEM.	183	183
11	215ZF585-10-0	艇架 AFT LASHING	1	ASSEM.	12.5	12.5
10	215ZF516-10-0	臂架 ARM SUPPORT	2	ASSEM.	110	220
9	250X400X8 L=700	方钢 SQUARE STEEL	2	GB45B	65	130
8	215ZF516-10-0P1	艇架 FITTED UNIT	1	ASSEM.	30	30
7	215ZF585-03-0	中横梁 MIDDLE CROSS BEAM	2	ASSEM.	400	800
6	215ZF585-02-0	斜坡 RAMP	1	ASSEM.	4200	4200
5	215ZF585-01-0	吊臂 DAVIT ARM	1	ASSEM.	3000	3000
4	215ZF-02-0	液压系统 HYDRAULIC WINCH	1	ASSEM.	380	380
3	215ZF516-03-0	液压系统 HYDRAULIC SYSTEM	1	ASSEM.	90	90
2	215ZF516-04-0	艇架 STOP FRAME	2	ASSEM.	54	108
1	215ZF516-01-0	枢轴 PIVOT	2	ASSEM.	93	186

NO.	CODE	NAME	QTY.	MATERIAL	SING. WEIGHT	TOT. WEIGHT	REMARK
总图 G.A.					215ZF585-00		
ASSEM.					重量 145		
FH85艇架装置					南京中船镇江船机厂		
FH85 LAUNCHING APPLIANCE					南京中船镇江船机厂		